

A1 Birtley to Coal House

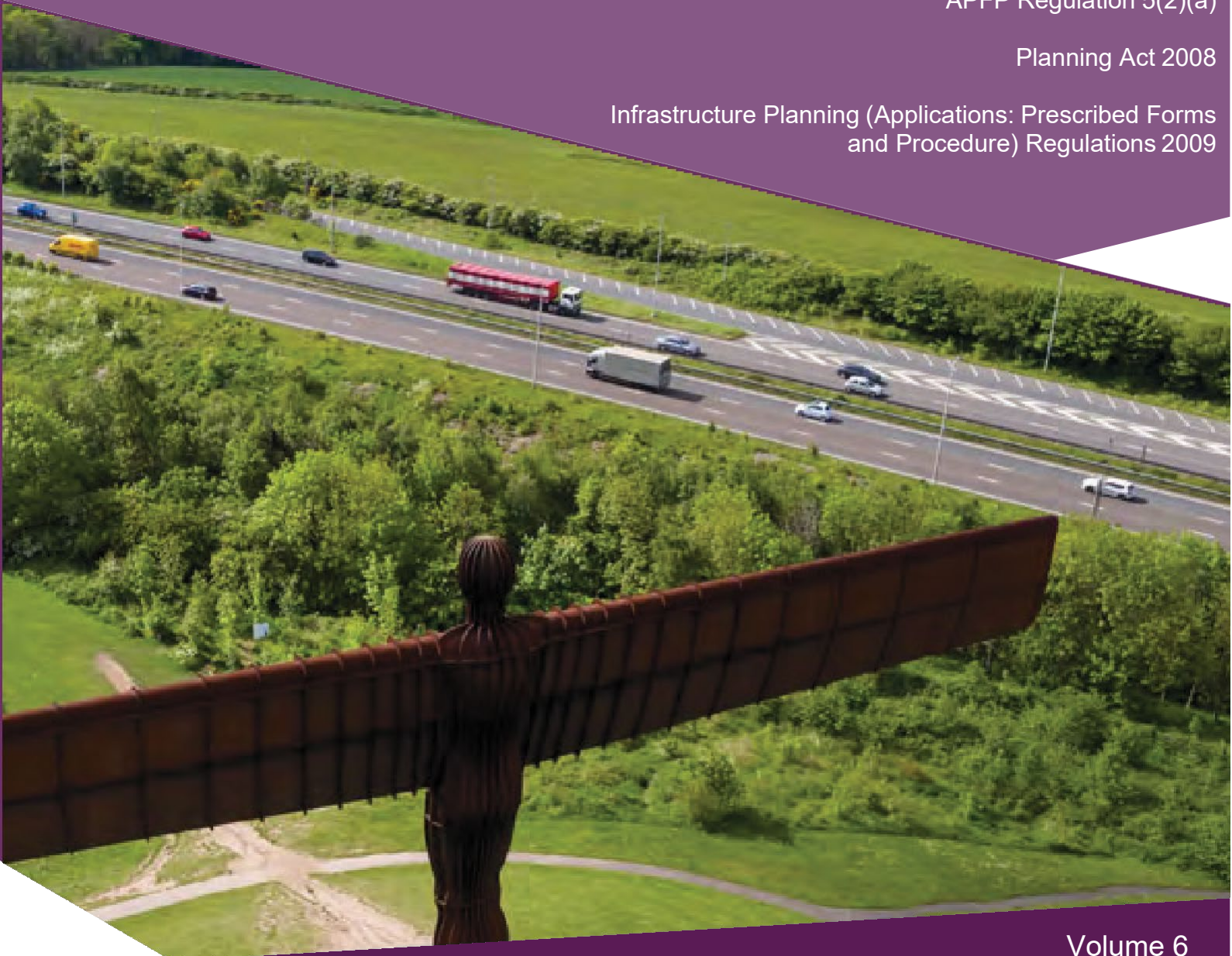
Scheme Number: TR010031

6.2 Environmental Statement – Figures 11.6 Do Minimum 2023 vs Do Minimum 2038 Noise Change Map

APFP Regulation 5(2)(a)

Planning Act 2008

Infrastructure Planning (Applications: Prescribed Forms
and Procedure) Regulations 2009



Infrastructure Planning

Planning Act 2008

**The Infrastructure Planning
(Applications: Prescribed Forms and
Procedures) Regulations 2009**

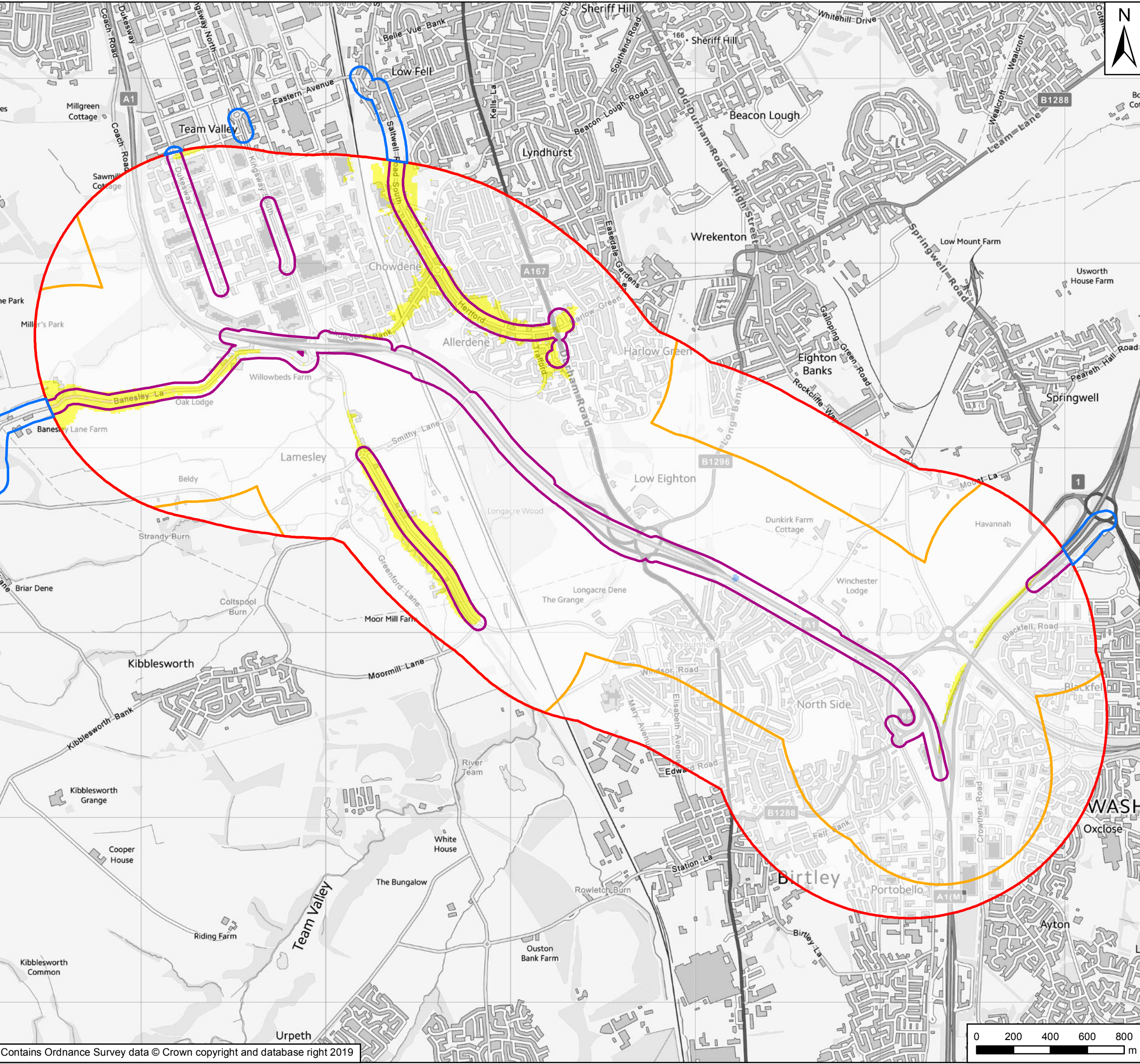
**A1 Birtley to Coal House
Development Consent Order 20[xx]**

**Environmental Statement -
Figures**

Regulation Reference:	APFP Regulation 5(2)(a)
Planning Inspectorate Scheme Reference	TR010031
Application Document Reference	TR010031/APP/6.2
Author:	A1 Birtley to Coal House Project Team, Highways England

Version	Date	Status of Version
Rev 0	14 August 2019	Application Issue

User Name: UKGDH001 Date Saved: 16/04/2019 14:23:08
 Document Path: \\uk.wsgroup.com\central\data\Projects\700419\A1\BCH\PCF Stage 3 and 4\03 Shared\EI A and flood risk\01 Model\GIS\MXD\Environmental Statement\Figure 11.6 DM 2023 v DM 2038 Noise Change Map.mxd



Key

- Wider Area 50m Buffers
- Airborne Vibration 40m Buffers
- 1km Boundary
- 600m Calculation Area

L_{A10,18hr} dB(A) Change

- 100 dB < x < -10 dB
- 10 dB < x < -5 dB
- 5 dB < x < -3 dB
- 3 dB < x < -1 dB
- 1 dB < x < 1 dB
- 1 dB < x < 3 dB
- 3 dB < x < 5 dB
- 5 dB < x < 10 dB
- 10 dB < x < 100 dB

Rev	Date	Description	By	Chk'd	App'd
P01	Dec 2018	First Issue	BR	JP	NJA

PINS Reference Number		TR010031			
Client					
Project Title		A1 Birtley to Coal House Scheme			
Drawing Title		Figure 11.6 - Do Minimum 2023 vs Do Minimum 2038 Noise Change Map, Daytime L _{A10,18hr} dB, Ground Floor, Free-field			

Scale	1:20,000	Drawn	BR	Checked	JP	Approved	JP	Authorised	NJA
Original Size	A3	Date	Dec 2018	Date	Dec 2018	Date	Dec 2018	Date	Dec 2018
Drawing Number	HE551462	Originator	WSP	Volume	6.2	Revision		P01	
B2CH		Section	Type	ID	Direction	Type	Role	Number	

If you need help accessing this or any other Highways England information, please call **0300 470 4580** and we will help you.

© Crown copyright 2019.

You may re-use this information (not including logos) free of charge in any format or medium, under the terms of the Open Government Licence. To view this licence:

visit www.nationalarchives.gov.uk/doc/open-government-licence/

write to the **Information Policy Team, The National Archives,**

Kew, London TW9 4DU, or email

psi@nationalarchives.gsi.gov.uk.

This document is also available on our website at www.gov.uk/highways

If you have any enquiries about this document A1BirtleytoCoalhouse@highwaysengland.co.uk or call **0300 470 4580***.

*Calls to 03 numbers cost no more than a national rate call to an 01 or 02 number and must count towards any inclusive minutes in the same way as 01 and 02 calls.

These rules apply to calls from any type of line including mobile, BT, other fixed line or payphone. Calls may be recorded or monitored.

Registered office Bridge House, 1 Walnut Tree Close, Guildford GU1 4LZ
Highways England Company Limited registered in England and Wales number 09346363